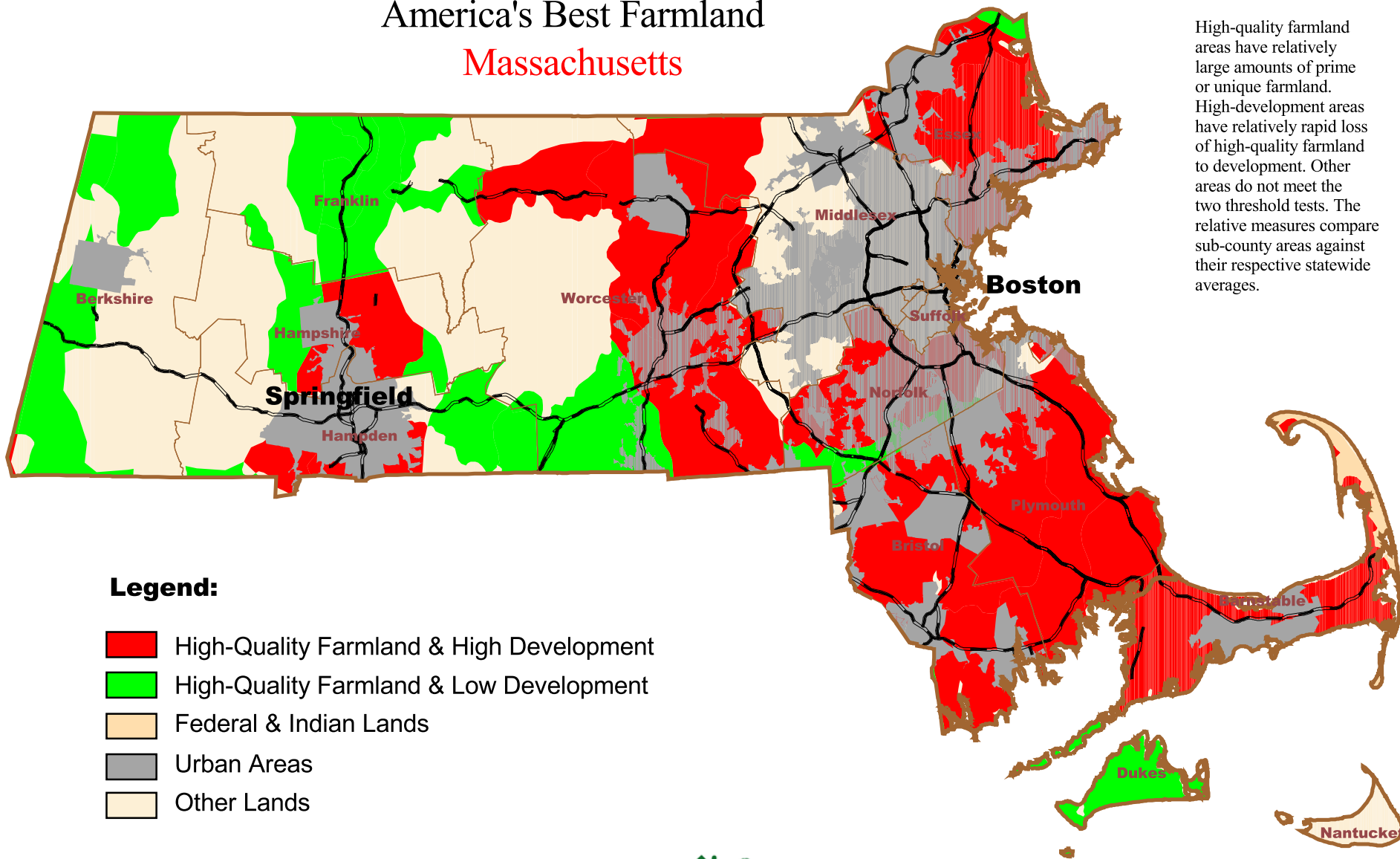


FARMING ON THE EDGE

Sprawling Development Threatens

America's Best Farmland

Massachusetts



High-quality farmland areas have relatively large amounts of prime or unique farmland. High-development areas have relatively rapid loss of high-quality farmland to development. Other areas do not meet the two threshold tests. The relative measures compare sub-county areas against their respective statewide averages.

Legend:

-  High-Quality Farmland & High Development
-  High-Quality Farmland & Low Development
-  Federal & Indian Lands
-  Urban Areas
-  Other Lands

